

Anti-ISL2 antibody

Cat. No.	ml164279
Package	25 µl/100 µl/200 µl
Storage	-20°C, pH7.4 PBS, 0.05% NaN ₃ , 40% Glycerol

Product overview

Description	Anti-ISL2 rabbit polyclonal antibody
Applications	ELISA, IHC
Immunogen	Synthetic peptide of human ISL2
Reactivity	Human, Mouse, Rat
Content	1.2 mg/ml
Host species	Rabbit
Ig class	Immunogen-specific rabbit IgG
Purification	Antigen affinity purification

Target information

Symbol	ISL2
Full name	ISL LIM homeobox 2
Synonyms	
Swissprot	Q96A47

Target Background

Islet-2 (insulin gene enhancer protein ISL-2) is a 359 amino acid protein encoded by the human gene ISL2. Islet-2 is a nuclear protein that contains two N-terminal LIM domains, followed by a homeodomain and a serine/ glutamine/threonine-rich C-terminus. Islet-2 is a transcriptional factor that defines subclasses of motor neurons that segregate into columns in the spinal cord and select distinct axon pathways. Islet-1 and Islet-2 are initially expressed by all postmitotic spinal motor neurons prior to diversification of somatic and visceral neuronal fates. Somatic, but not visceral, motor neurons maintain Islet-2 expression at later embryonic stages. An early phase of Islet-2 expression by prospective visceral motor neurons of the sympathetic preganglionic motor column is critical for the emergence of complete visceral motor neuron character. Mutations that reduce or eliminate both Islet-1 and Islet-2 activity will result in pronounced defects in visceral motor neuron generation and eroded somatic motor neuron character. Transcriptional factor that defines subclasses of motoneurons that segregate into columns in the spinal cord and select distinct axon pathways.

订购热线: 4008-898-798

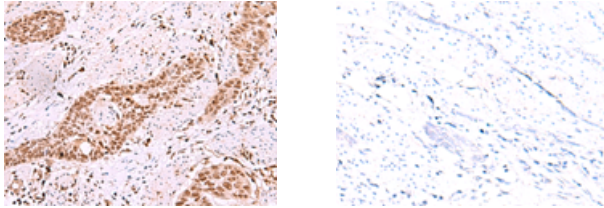
Applications

Immunohistochemistry

Predicted cell location: Nucleus

Positive control: Human esophagus cancer

Recommended dilution: 40-200



The image on the left is immunohistochemistry of paraffin-embedded Human esophagus cancer tissue using ml164279(ISL2 Antibody) at dilution 1/40, on the right is treated with synthetic peptide. (Original magnification: $\times 200$)

ELISA

Recommended dilution: 5000-10000

联系电话: 4008-898-798, 021-61725725

联系QQ: 2881505695, 2881505696

邮箱: mlbio_cn@yeah.net

网址: www.mlbio.cn