

Anti-EEF1AKMT2 antibody

Cat. No.	ml225632
Package	25 µl/100 µl/200 µl
Storage	-20°C, pH7.4 PBS, 0.05% NaN ₃ , 40% Glycerol

Product overview

Description	Anti-EEF1AKMT2 rabbit polyclonal antibody
Applications	ELISA, IHC
Immunogen	Fusion protein of human EEF1AKMT2
Reactivity	Human, Mouse
Content	0.9 mg/ml
Host species	Rabbit
Ig class	Immunogen-specific rabbit IgG
Purification	Antigen affinity purification

Target information

Symbol	EEF1AKMT2
Full name	EEF1A lysine methyltransferase 2
Synonyms	Efm4; METTL10; C10orf138
Swissprot	Q5JPI9

Target Background

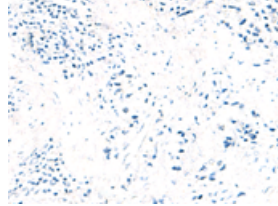
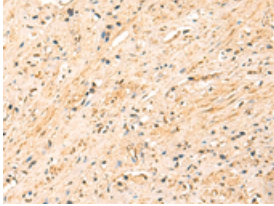
Protein-lysine methyltransferase that selectively catalyzes the trimethylation of EEF1A at 'Lys-318'.

订购热线: 4008-898-798

Applications

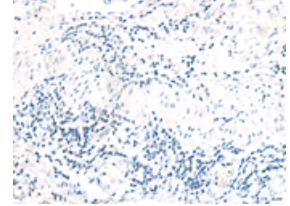
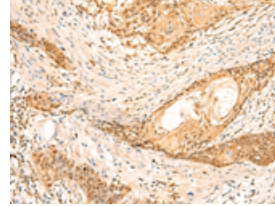
Immunohistochemistry

Predicted cell location: Cytoplasm or Nucleus
Positive control: Human prostate cancer
Recommended dilution: 50-300



The image on the left is immunohistochemistry of paraffin-embedded Human prostate cancer tissue using ml225632(EEF1AKMT2 Antibody) at dilution 1/50, on the right is treated with fusion protein. (Original magnification: ×200)

Predicted cell location: Cytoplasm or Nucleus
Positive control: Human esophagus cancer
Recommended dilution: 50-300



The image on the left is immunohistochemistry of paraffin-embedded Human esophagus cancer tissue using ml225632(EEF1AKMT2 Antibody) at dilution 1/50, on the right is treated with fusion protein. (Original magnification: ×200)

ELISA

Recommended dilution: 5000-10000

联系电话: 4008-898-798, 021-61725725

联系QQ: 2881505695, 2881505696

邮箱: mlbio_cn@yeah.net

网址: www.mlbio.cn